



MODEL 1560

FEATURES

Model 1560 is a high gain helix antenna suitable for L-band satellite communications by fixed or transportable stations.

It has applications for the defence forces, emergency services, mining and exploration companies, rural communities and homestead, parks and wildlife outposts, etc.

The antenna is a broad bandwidth, directional, circularly polarized model with the radiator element enclosed in a robust, impact resistant radome which is UV protected.

Rugged and weatherproof. Quickly erected and easily aligned accurately. Lightweight and transportable. Cost effective.

CONSTRUCTION

The radome is filled with closed cell foam that prevents moisture penetration and protects the radiator from any corrosive atmosphere and ensure constant electrical characteristics.

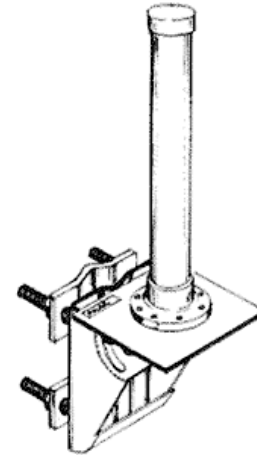
A copper strip helix radiator is embedded inside the radome.

NOTES

Mounting: to a pipe $\varnothing 25-55$ mm with the supplied clamps, or wall or roof mounting is optional.

Alignment: azimuth 360° , elevation $0-90^\circ$.

Right or left hand circular polarization models available to order



Model 1560

MODEL NO	1560
FREQUENCY RANGE	1525 - 1660 MHz
IMPEDANCE	50 ohms
BANDWIDTH	135 MHz
VSWR	< 1.3:1
POLARIZATION	RHC
GAIN	> 13.0 dBi
CIRCULARITY	< ± 0.75 dB
BEAMWIDTH	27°
POWER	20 Watts (input)
LIGHTNING	DC GROUND
TERMINATION	'TNC' FEMALE
LENGTH	750 mm
WEIGHT	2.5kg
PROJECTED AREA	0.05 m ²
LATERAL THRUST *	0.080 kN (@ 210 km/h)

* In accordance with AS 1170 : Part 2 *SAA Loading Code - Wind Forces*

